

2010 Winter  
e-cadence

**a r t**  
leaguehouston

*A Wishing Well For Houston (Detail)*  
2009  
Heath Hayner, Brian Piana, Aram Nagle

# ART CALENDAR

## LEAGUE

November 2009 through March 2010

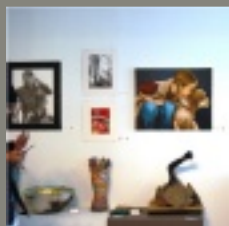
### exhibitions calendar



#### NOVEMBER 13 - DECEMBER 31:

Brent Kollock  
Obsession of the Essential  
Paintings

Divya Murthy and Nicola Parente  
Natural Recyclers and Wasted Resolve  
Installations and outdoor sculptures



#### JANUARY 5 - FEBRUARY 2:

Winners of The Scholastic Art Awards of  
the Harris County Department of Education  
Gold Key Exhibition  
Mixed media



#### JANUARY 15 - FEBRUARY 26:

Heath Hayner, Brian Piana, Aram Nagle  
Wishing Well for Houston  
Sculpture/Installation



#### MARCH 12 - APRIL 25:

FotoFest  
FotoFest 2010 Biennial  
Photography

### other events

#### NOVEMBER 30 - DECEMBER 6:

PRE REGISTRATION

#### DECEMBER 14 - DECEMBER 15:

BEGINNING ENCAUSTICS WORKSHOP

#### DECEMBER 7 - DECEMBER 20:

EARLY REGISTRATION

#### DECEMBER 21 - JANUARY 10:

GENERAL REGISTRATION

#### DECEMBER 21 - DECEMBER 23:

WINTER ART CAMP FOR KIDS, SESSIONS I & II

#### DECEMBER 28 - DECEMBER 30:

WINTER ART CAMP FOR KIDS, SESSIONS III & IV

#### JANUARY 11:

LATE REGISTRATION BEGINS

#### JANUARY 16:

COMPREHENSIVE ABSTRACT WORKSHOP

#### FEBRUARY 6:

EXPERIMENTAL WAX WORKS WORKSHOP

## ART CAMP FOR KIDS

ALH spent the summer renovating its charming 1930s bungalow on Bomar Street to create more space for youth and family programming. Beginning this winter, ALH will offer four three-day winter camps for children. Let your kids be among the first to experience this new program!

#### Winter Sessions:

Session I December 21-23, 2009	9:00am to noon	ages 5-8
Session II December 21-23, 2009	1:00 - 4:00pm	ages 9-12
Session III December 28-30, 2009	9:00am to noon	ages 5-8
Session IV December 28-30, 2009	1:00 - 4:00pm	ages 9-12

**Tuition PER SESSION per student is \$90. Registration fee is an additional \$60 or free for Art League household members. Price includes supplies.**

**Space is limited to twenty-two (22) per session, so call today to reserve your spot! To register or for more information, contact us at 713-523-9530.**

Art League Houston will offer summer camps for kids beginning in 2010. Look for details in our spring catalog!

### winter workshops

#### BEGINNING ENCAUSTICS (WW-1) All Levels MONDAY & TUESDAY, 9:30 A.M. TO 12:30 P.M. DECEMBER 14 & 15 (6 HOURS)

**\$110 MEMBERS / \$145 NON-MEMBERS + \$15 SUPPLY FEE  
SALLI BABBITT**

Using the traditional method of mixing oil paint and beeswax, students will discover the exciting possibilities of abstract art. Students will experiment with layers while combining papers, scratching, textures, powders, and incorporating found objects.

#### COMPREHENSIVE STUDY OF ABSTRACT ART (WK-1) All Levels SATURDAY, 9:00 A.M. TO 1:00 P.M.

**JANUARY 16 (4 HOURS)  
\$90 MEMBERS / \$125 NON-MEMBERS + \$25 SUPPLY FEE  
SALLI BABBITT**

This workshop will serve as an introduction to composition with respect to color, line, and contrast. Using examples, handouts, and hands on projects (6 compositions), students will examine light, positive/negative space, and textural surfaces. All materials supplied by instructor.

#### EXPERIMENTAL WAX WORKS (WK-2) All Levels

**SATURDAY, 9:00 A.M. TO 2:00 P.M.  
FEBRUARY 6 (5 HOURS)  
\$100 MEMBERS / \$135 NON-MEMBERS + \$50 SUPPLY FEE  
SALLI BABBITT**

Students are introduced to composition in color using opaque and transparent colored encaustic blocks, beeswax, crystalline, marble dust, wire, found objects, and powdered pigments. Each student will complete 6 compositions. All materials supplied by instructor.



# ART CLASSES

## REGISTRATION CALENDAR

NOVEMBER 30 - DECEMBER 6: PRE REGISTRATION

DECEMBER 7 - DECEMBER 20: EARLY REGISTRATION

DECEMBER 21 - JANUARY 10: GENERAL REGISTRATION

JANUARY 11 - END OF SEMESTER: LATE REGISTRATION

### printmaking

**PRINTMAKING: LINO PRINTING (MM-1)** All Levels  
SATURDAY, 10:00 A.M. TO 1:00 P.M.  
JANUARY 23 - MARCH 27 (10 WEEKS)  
\$310 MEMBERS / \$345 NON-MEMBERS  
RAHUL MITRA

This course serves as an introduction to the linocut printmaking technique, a variant of woodcut, in which a sheet of linoleum is used for the relief surface. The instructor will introduce students to a variety of tools for cutting, techniques for printing from the block, and the proper use of the printing press. By the end of this course, students will have a firm understanding of the basic elements of printmaking as well as the necessary knowledge to execute successful lino cut prints.

**PRINTMAKING: FOCUS ON MONOTYPE (MM-2)** All Levels  
THURSDAY, 9:30 A.M. TO 12:30 P.M.  
JANUARY 21 - MARCH 25 (10 WEEKS)  
\$310 MEMBERS / \$345 NON-MEMBERS  
ARMANDO RODRIGUEZ

Become acquainted with one of the most painterly methods among the printmaking techniques. Monoprints and monotypes are essentially printed paintings. Although images can be similar, editioning is not possible—no two images can be exactly the same. The Monotype process creates a translucency and a quality of light very different from a painting on paper or a print. There is beauty in its spontaneity and combination of printmaking, painting and drawing.

**PRINTMAKING: COLLAGRAPH (MM-3)** All Levels  
THURSDAY, 1:00 P.M. TO 4:00 P.M.  
JANUARY 21 - MARCH 25 (10 WEEKS)  
\$310 MEMBERS / \$345 NON-MEMBERS  
ARMANDO RODRIGUEZ

Collagraph, a loose term meaning a print made from a collage. Collagraph is essentially an experimental form of printmaking which involves adding layers of adhesive or solid material to the surface of a printing plate, making it possible to incorporate both relief and intaglio printmaking methods on a single plate. A highly fun and experimental medium.

### sculpture

**EXPANDED SCULPTURE PROCESSES (S-1)** All Levels  
THURSDAY, 6:30 P.M. TO 9:30 P.M.  
JANUARY 21 - MARCH 25 (10 WEEKS)  
\$310 MEMBERS / \$345 NON-MEMBERS + \$25 SUPPLY FEE  
EMILY SLOAN

Students experiment with different sculptural processes. Using basic mold-making, plastic constructions and other exploratory processes, students will explore themes such as art and the body and space and time.

### design

**PRINCIPLES OF DESIGN (DS-1)** All Levels  
MONDAY, 1:00 P.M. TO 4:00 P.M.  
JANUARY 18 - MARCH 22 (10 WEEKS)  
\$310 MEMBERS / \$345 NON-MEMBERS  
RODRIGO AGUILERA

This course is designed to instruct students on the fundamental principles of design. Using the formal elements of analysis (line, shape, value, texture, and color) students will learn to employ the principles of harmony, variety, and balance in order to successfully accomplish well designed artwork with a strong sense of unity.

**DESIGN (DS-2)** All Levels  
THURSDAY, 1:00 P.M. TO 4:00 P.M.  
JANUARY 21 - MARCH 25 (10 WEEKS)  
\$310 MEMBERS / \$345 NON-MEMBERS  
ANDREA CANALITO

This fun, project-oriented class will focus on the basic principles of design. Students will learn to utilize the formal elements of line, shape, texture, and color to create harmonious, balanced, and interesting compositions. This course will provide for students the tools to effectively communicate using visual information with knowledge and confidence.

### jewelry

**JEWELRY (J-1)** All Levels  
MONDAY, 6:30 P.M. TO 9:30 P.M.  
JANUARY 18 - MARCH 22 (10 WEEKS)  
\$310 MEMBERS / \$345 NON-MEMBERS + \$35 SUPPLY FEE  
MARY ROGERS

Jewelry construction techniques including: piercing, drilling, soldering, riveting, forging, reticulation, and roller printing, as well as hydraulic forming. Advanced topics may include granulation, jewelry rendering, and blanking. A strong emphasis on problem solving helps students develop a personal design vocabulary, while the multi-level class allows new students to see a variety of advanced techniques and application. Individualized instruction allows students to progress at their own pace.

**JEWELRY IN METAL CLAY I (J-2)** All Levels  
TUESDAY, 6:00 P.M. TO 9:00 P.M.  
JANUARY 19 - FEBRUARY 16 (5 WEEKS)  
\$185 MEMBERS / \$220 NON-MEMBERS + \$25 SUPPLY FEE  
ANN RUSH

**JEWELRY IN METAL CLAY II (J-3)** All Levels  
TUESDAY, 6:00 P.M. TO 9:00 P.M.  
FEBRUARY 23 - MARCH 23 (5 WEEKS)  
\$185 MEMBERS / \$220 NON-MEMBERS + \$25 SUPPLY FEE  
ANN RUSH

**JEWELRY IN METAL CLAY I & II (J-4)** All Levels  
TUESDAY, 6:00 P.M. TO 9:00 P.M.  
JANUARY 19 - MARCH 23 (10 WEEKS)  
\$310 MEMBERS / \$345 NON-MEMBERS + \$25 SUPPLY FEE  
ANN RUSH

Learn the techniques associated with producing Fine Silver jewelry, from Art Clay Silver, the only environmentally-friendly metal clay on the market to date. Each metal clay technique will be introduced and reinforced with the purpose of empowering the student to construct and complete jewelry or wearable art from his or her own designs. As each technique is covered, variations of the technique will be discussed to allow the students maximum design freedom. Each student will have the opportunity to complete 3-5 pieces of Fine Silver (otherwise known as .999) jewelry. These jewelry pieces may be of a student's personal design, or students may choose to follow the technique sheets provided with the classes. Participants will have the opportunity to work with the following techniques: rolling, coil rolling, trimming, joining, hollow form-building, bezel setting, finish work, firing, texturing, doming, carving, and many more.

# ART CLASSES continued

## *painting*

---

**BEGINNING PAINTING (P-1)** All Levels  
TUESDAY, 1:00 P.M. TO 4:00 P.M.  
JANUARY 19 - MARCH 23 (10 WEEKS)  
\$310 MEMBERS / \$345 NON-MEMBERS  
ANDREA CANALITO

This fun, hands-on class will focus on the basics of learning how to paint from the ground up. Students will learn how to put together interesting compositions, "sketch" with paint, and build on their work to form finished paintings. Students will also be exploring how different types of paint, techniques, and supplies function in order to enhance their work. Students will paint from life to start, then students will be encouraged to bring their own ideas to the classroom as fodder for their paintings.

**FUNDAMENTALS OF OIL PAINTING (P-2)** All Levels  
TUESDAY, 9:30 A.M. TO 12:30 P.M.  
JANUARY 19 - MARCH 23 (10 WEEKS)  
\$310 MEMBERS / \$345 NON-MEMBERS + \$5 SUPPLY FEE  
CHOLLA

This course involves a careful examination of every component of oil painting, its characteristics and variables. Students will learn the basic physical and chemical aspects of the painting mediums. Students will slowly be introduced to contemporary uses of materials and techniques as they review and experiment with classical oil painting methods.

**OIL PAINTING THE EASY METHOD (P-3)** All Levels  
WEDNESDAY, 1:00 P.M. TO 4:00 P.M.  
JANUARY 20 - MARCH 24 (10 WEEKS)  
\$310 MEMBERS / \$345 NON-MEMBERS  
RUBEN COY

**OIL PAINTING THE EASY METHOD (P-4)** All Levels  
WEDNESDAY, 6:30 P.M. TO 9:30 P.M.  
JANUARY 20 - MARCH 24 (10 WEEKS)  
\$310 MEMBERS / \$345 NON-MEMBERS  
RUBEN COY

In this modern method students use oil over acrylic paint. The painting progresses in layers, first in layers of acrylic followed by layers in oil. The simplicity of this method makes this class ideal for the beginner and a boost for the advanced student. Using this technique creates finished paintings with a unique luminosity and a sense of depth. Painting only in acrylic is recommended for the extreme beginner in order to learn layering more quickly.

**CREATIVE PAINTING (P-5)** All Levels  
WEDNESDAY, 9:30 A.M. TO 12:30 P.M.  
JANUARY 20 - MARCH 24 (10 WEEKS)  
\$310 MEMBERS / \$345 NON-MEMBERS + \$5 SUPPLY FEE  
CHOLLA

Students will learn to transpose and work from photos/sketches. Instructor will cover the seven components of any successful painting including color, composition, and texture. Students may use oil, acrylic, watercolor, pastel, or mixed media. Individual instruction in each material is given as students progress in their preferred style.

**COLLABORATIVE ASSAMBLAGE (P-6)** All Levels  
MONDAY, 1:30 P.M. TO 4:30 P.M.  
JANUARY 18 - MARCH 22 (10 WEEKS)  
\$310 MEMBERS / \$345 NON-MEMBERS + \$50 SUPPLY FEE  
KELLY ALISON

This class is all about collaboration. Students create work together according to the collaborative desires of the class and they usually create individual work as well. Every semester each student usually gets to take home one or two of the large works the group creates and possibilities for an exhibition are on the horizon. The instructor will provide all materials for this mixed media class; as the experimental methods and processes we employ are constantly changing. Professional artists mingle with creative patrons while experts teach each other and beginners learn that anything can become art and anyone can be an artist. Beginners welcome.

**LANDSCAPE INTO ART (P-7)** Intermediate  
TUESDAY, 6:30 P.M. TO 9:30 P.M.  
JANUARY 19 - MARCH 23 (10 WEEKS)  
\$310 MEMBERS / \$345 NON-MEMBERS  
STEVE PARKER

Students learn the essentials of utilizing memory and personal experience to express something interesting and compelling about their subject. Practicing this method, students achieve a unique sense of abstraction, and will see their subject with fresh perspective. Instructor will offer techniques and specific methods to guide students through various technical concerns during painting sessions. Students will be introduced to different oil mediums and their effective use. Class includes informal lectures ranging from painting methods to texts on the inspiration and techniques used by celebrated artists. Given class consensus and pleasant weather, students may paint outdoors. Previous painting experience is recommended.

**INDOOR / OUTDOOR LANDSCAPE (P-8)** Intermediate  
THURSDAY, 1:00 P.M. TO 4:00 P.M.  
JANUARY 21 - MARCH 25 (10 WEEKS)  
\$310 MEMBERS / \$345 NON-MEMBERS  
STEVE PARKER

Recommended for intermediate students or as a continuation of *Landscape into Art*. Instructor will give demonstrations and discussion, both in class and during outdoor painting sessions. Learning to make paintings and studies on site is essential to creating a more convincing and expressive landscape. Painting locations will be selected by class consensus. Weather permitting, class will meet outdoors during at least four sessions.

**FIGURE PAINTING (P-9)** All Levels  
THURSDAY, 6:30 P.M. TO 9:30 P.M.  
JANUARY 21 - MARCH 25 (10 WEEKS)  
\$310 MEMBERS / \$345 NON-MEMBERS + MODEL FEE (by class size)  
HAGIT BARKAI

Students experiment with the classical and contemporary approaches to figure painting. Using live models, students will practice essential principles of painting from observation, such as measuring, achieving tonal balance, mixing colors and building a composition, and will learn how to use them when working from photographs, memory and imagination. Different paintings that deal with the figure will be used in presentations and discussions, from classical realism to contemporary ideas of figurative painting. Students painting in oil, acrylic and color pastels are welcome.

**CONTEMPORARY PORTRAIT AND FIGURE (P-10)** All Levels  
MONDAY, 6:30 P.M. TO 9:30 P.M.  
JANUARY 18 - MARCH 22 (10 WEEKS)  
\$310 MEMBERS / \$345 NON-MEMBERS + \$50 MODEL FEE + \$50 SUPPLY FEE  
KELLY ALISON

Working from live figure and portrait models, photocopies and sketches, students will learn to express themselves through the techniques of contemporary masters. The instructor will provide all materials for this mixed media class; a fun survey that will cover artist like Matisse, Picasso, Kahlo, Clemente, Close, and even Ryden. We will learn the process and style of Modernist, Expressionist, Pop Surrealist and Provisionalist, depending on the interest of the class. During the semester students will create several ready to hang professional looking contemporary paintings and will gain the technical knowledge to develop their own personal portrait and figure style. Beginners welcome.

**CLASSICAL PORTRAIT PAINTING IN OIL (P-11)** Intermediate  
TUESDAY, 12:30 P.M. TO 3:30 P.M.  
JANUARY 19 - MARCH 23 (10 WEEKS)  
\$310 MEMBERS / \$345 NON-MEMBERS + MODEL FEE (by class size)  
POLLY LIU

Model fee due first day of class, fee varies by class size. Students begin painting in "Grisaille" - painting executed entirely in monochrome, usually in shades of grey or brown - to eliminate the problems of color and value and to concentrate on accuracy of drawing and the effects of light on the figure. The second part of the class utilizes a limited palette, allowing students to explore and understand the harmony and unity of light. For intermediate to advanced students.

**DRAWING FUNDAMENTALS (DR-1)** All Levels  
**SATURDAY, 9:45 A.M. TO 12:45 P.M.**  
**JANUARY 23 - MARCH 27 (10 WEEKS)**  
**\$310 MEMBERS / \$345 NON-MEMBERS + \$5 SUPPLY FEE**  
**EMILY SLOAN**

This fun, hands-on class will focus on the fundamentals of drawing, with tailored instruction to strengthen your individual skill set. Students will focus on the fundamentals of "seeing": gauging accurate proportions, correct foreshortening, using negative space, seeing angles, etc. Students will also focus on the basics "mark-making," line variation, lost and found edges, searching lines, tone variation, gradation, wrapping lines around form, etc. By the end of this class students will be able to draw what they see more accurately and beautifully!

**BASIC DRAWING AND COMPOSITION (DR-2)** All Levels  
**MONDAY, 9:00 A.M. TO 12:00 P.M.**  
**JANUARY 18 - MARCH 22 (10 WEEKS)**  
**\$310 MEMBERS / \$345 NON-MEMBERS**  
**POLLY LIU**

Students are introduced to the classical style of drawing and composition. Students will develop a comprehension of the elements of art and the principles of design including the use of movement and rhythm, proportion, balance, unity, and variety. Students will learn basic drawing methods such as contour and gesture as well as shading techniques and one point perspective.

**FIGURE DRAWING IN CHARCOAL (DR-3)** All Levels  
**WEDNESDAY, 1:00 P.M. TO 4:00 P.M.**  
**JANUARY 20 - MARCH 24 (10 WEEKS)**  
**\$310 MEMBERS / \$345 NON-MEMBERS + MODEL FEE (by class size)**  
**HAGIT BARKAI**

This course is intended to provide the student with the technical information necessary to draw the human figure convincingly in various positions. This is an essential course for any student who is interested in transitioning from drawing to painting in oils/acrylics or pastels, and those who seek to understand the role of the figure in traditional and contemporary art. Exercises are designed to stimulate seeing the figure in its entirety and apply methods of measurement that allow the student to manipulate the visual information with knowledge and confidence.

**CLASSICAL FIGURE DRAWING (DR-4)** Intermediate  
**TUESDAY, 9:00 A.M. TO 12:00 P.M.**  
**JANUARY 19 - MARCH 23 (10 WEEKS)**  
**\$310 MEMBERS / \$345 NON-MEMBERS + MODEL FEE (by class size)**  
**POLLY LIU**

Model fee due first day of class, fee varies by class size. Students are introduced to the French Atelier training to draw the human figure accurately. The method of "sight size," a fundamental scale system, is used to reproduce the figure accurately. Students work from a live model focusing on outline, proportion, shadow, shape, and value.

*watercolor*

**WATERCOLOR (W-1)** All Levels  
**MONDAY, 1:00 P.M. TO 4:00 P.M.**  
**JANUARY 18 - MARCH 22 (10 WEEKS)**  
**\$310 MEMBERS / \$345 NON-MEMBERS**  
**CAROLINE GRAHAM**

**WATERCOLOR (W-2)** All Levels  
**WEDNESDAY, 6:30 P.M. TO 9:30 P.M.**  
**JANUARY 20 - MARCH 24 (10 WEEKS)**  
**\$310 MEMBERS / \$345 NON-MEMBERS**  
**CAROLINE GRAHAM**

Explore the vibrancy and transparency of this medium. Instructor will emphasize color, design, and contrast. Students will learn to layer and control the pigment, rescue the white paper and still have a spontaneous, fresh-looking result.

**PORTRAITS IN WATERCOLOR (W-3)** All Levels  
**THURSDAY, 9:30 A.M. TO 12:30 P.M.**  
**JANUARY 21 - MARCH 25 (10 WEEKS)**  
**\$310 MEMBERS / \$345 NON-MEMBERS + MODEL FEE (by class size)**  
**CHOLLA**

Students will be put at ease with figure studies as they learn to "build" an accurate and beautiful watercolor painting working directly from a live model. This course will provide and demonstrate key ways to improve each student's watercolor techniques. Through the fun and relaxed atmosphere of this course, students will gain knowledge, understanding, and tools which will enable them to improve the accuracy of their work.



**3 locations to serve you...**

**2001 Montrose Blvd.**  
 Houston, TX 77006  
 ☎ (713) 526-5221

Mon. - Fri. 9:00 AM to 8:00 PM  
 Saturday 10:00 AM to 7:00 PM  
 Sunday 12:00 NOON to 6:00 PM

**2237 South Voss**  
 Houston, TX 77057  
 ☎ (713) 780-0440

Mon. - Fri. 9:00 AM to 7:00 PM  
 Saturday 10:00 AM to 6:00 PM  
 Sunday 12:00 NOON to 6:00 PM

**1507 Baybrook Mall Dr.**  
 Houston, TX 77546  
 ☎ (281) 486-9320

Mon. - Fri. 10:00 AM to 7:00 PM  
 Saturday 10:00 AM to 6:00 PM  
 Sunday 12:00 NOON to 6:00 PM

**Everyday Discounts**

# ART LEAGUE INSTRUCTORS

For Detailed Biographies Visit [www.artleaguehouston.org](http://www.artleaguehouston.org)



*Chaplin*

**RODRIGO AGUILERA**  
Principles of Design (DS-1)



*Coffee Man*

**KELLY ALISON**  
Contemporary Portrait (P-10)  
Collaborative Assambla... (P-6)



*Brighter Tomorrow*

**SALLI BABBITT**  
Beginning Encaust.. (WW-1)  
Comprehensive Abs... (WK-1)  
Experimental Wax (WK-2)



*Cave 1*

**HAGIT BARKAI**  
Figure Painting (P-9)  
Figure Drawing in C... (DR-3)



*Twinkle Twinkle Baby*

**ANDREA CANALITO**  
Beginning Painting (P-1)  
Design (DS-2)



*Untitled*

**CHOLLA**  
Fundamentals of Oil ... (P-2)  
Creative Painting (P-5)  
Watercolor - Figure (W-3)



*Lost River*

**RUBEN COY**  
Oil Painting: The Easy... (P-3)  
Oil Painting: The Easy... (P-4)



*Fall of the Arch Angel*

**RON GORDON**  
Principles of Comp... (MM-3)



*Untitled*

**CAROLINE GRAHAM**  
Watercolor (W-1)  
Watercolor (W-2)



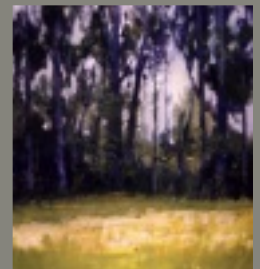
*Egyptian*

**POLLY LIU**  
Classical Portrait in Oil (P-11)  
Basic Drawing and ... (DR-2)  
Classical Figure Dra... (DR-4)



*Untitled*

**RAHUL MITRA**  
Printmaking: Lino P... (PM-1)



*Untitled*

**STEVE PARKER**  
Landscape Into Art (P-7)  
Indoor/Outdoor Lan... (P-8)



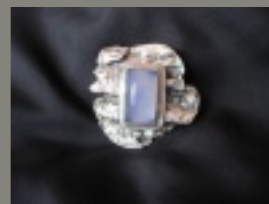
*Skull 8*

**ARMANDO RODRIGUEZ**  
Printmaking: Mono... (PM-2)  
Printmaking: Colla... (PM-3)



*Calligraphy Series 28*

**MARY ROGERS**  
Jewelry (J-1)



*Untitled*

**ANN RUSH**  
Jewelry in Metal Clay I (J-2)  
Jewelry in Metal Clay II (J-3)  
Jewelry in Metal .. I & II (J-4)



*Memento Mori Landscape*

**EMILY SLOAN**  
Drawing Fundament... (DR-1)  
Expanded Sculpture... (S-1)

# TO REGISTER BY PHONE CALL 713.523.9530

**CONTACT US**

Art League Houston Office Hours:  
 Monday - Friday 9:00 a.m. - 5:00 p.m. Saturday 11:00 a.m. - 5:00 p.m.  
 Phone: 713.523.9530 Fax: 713.523.4053  
 www.artleaguehouston.org  
 1953 Montrose Blvd. Houston, TX 77006

**GENERAL**

- Art League Houston reserves the right to combine or reschedule classes, or adjust tuition and fees as needed.
- Art League Houston reserves the right to refuse enrollment to participants with a history of unacceptable behavior.
- If it is necessary for Art League Houston to cancel a class for any reason, all registered participants will be informed as soon as possible and Art League Houston will extend the opportunity to transfer to another class or receive a credit.
- Credit must be used within one year from date issued.
- Tuition for classes will not be pro-rated.

**PAYMENT**

• Enrollments are not accepted without payment in full. Checks, cash, credit cards (Discover, Master Card, and Visa) and gift certificates are accepted.

**DISCOUNTS**

• Members of Art League Houston receive a tuition discount on classes and workshops for one year from the date their membership is purchased.

**ADDITIONAL FEES**

• Some courses may require additional fees paid to Art League Houston or collected the first day of class by instructor. These fees are stated in the class schedule, and may include, but are not limited to: supplies, model fees, and equipment maintenance.

• Students registering after the expressed registration deadline will be charged a non-refundable, minimum late registration fee of \$15.00.

**WITHDRAWAL & REFUNDS**

• **\$60 registration fee is non-refundable, unless classes are cancelled by Art League Houston.**

• Membership fees are non-refundable.

• Refunds will be issued for students that officially withdraw before the first scheduled class meeting.

• Notice of withdrawal must be completed on the Art League Houston drop form which can be emailed or picked up at our offices. Call 713.523.9530 to obtain a drop form.

• Failure to attend sessions or verbal notification will not be regarded as an official notice of withdrawal. Our drop form must be completed in full and returned to the office before the first scheduled day of class.

• Refunds will be processed after the second week of class has been completed. A refund check will be mailed to you no later than two weeks from this time. **No refunds will be given after the first class meets.**

RETURN FORM BY: Mail / Drop off: 1953 Montrose Blvd. Houston, TX 77006 Fax: 713.523.4053 Phone: 713.523.9530

**ART LEAGUE HOUSTON WINTER 2009 REGISTRATION FORM**

How did you hear about us? \_\_\_\_\_

First Time Enrolling?

NAME \_\_\_\_\_ EMAIL \_\_\_\_\_

ADDRESS \_\_\_\_\_ PHONE \_\_\_\_\_

CITY \_\_\_\_\_ STATE \_\_\_\_\_ ZIPCODE \_\_\_\_\_ CELL PHONE \_\_\_\_\_

**REGISTER BEFORE DECEMBER 20TH AND RECEIVE \$25 OFF EACH CLASS!** -- excludes workshops

COURSE TITLE	COURSE CODE	DAY/TIME	TUITION	LAB FEES
	( - )		\$	+\$
	( - )		\$	+\$
	( - )		\$	+\$
	( - )		\$	+\$

Payment Method: <input type="checkbox"/> Check # <input type="checkbox"/> Cash Payment <input type="checkbox"/> Discover <input type="checkbox"/> MasterCarrd <input type="checkbox"/> Visa <input type="checkbox"/> American Express    Policies Read _____ Card # _____ Security code _____ Exp. Date _____ Cardholder _____ Billing Zip _____	SUBTOTAL \$ DISCOUNT \$ MEMBER \$ LATE FEE \$ TOTAL \$
--------------------------------------------------------------------------------------------------------------------------------------------------------------------------------------------------------------------------------------------------------------------------------------------------------------------------------------------------------------	--------------------------------------------------------------------

**I have read and understand the policies above. SIGN HERE** \_\_\_\_\_

Office Use Only: Date Paid \_\_\_\_\_ Total Paid \$ \_\_\_\_\_ Received By (initial) \_\_\_\_\_ Mem Expires on: \_\_\_\_/\_\_\_\_/\_\_\_\_



gallery hours

m - f 9am - 5pm  
sat 11am - 5pm

713.523.9530  
713.523.4053 (fax)

[www.artleaguehouston.org](http://www.artleaguehouston.org)

ART LEAGUE HOUSTON IS A 501(C)(3) NON-PROFIT CHARITABLE ORGANIZATION.

Art League Houston  
1953 Montrose Blvd.  
Houston, TX 77006

Non-Profit Org.  
US Postage  
**PAID**  
Houston Texas  
Permit No. 8909



## Need some practice?

ALH members bring \$10 model fee on:

Wednesdays - figure painting lab (long pose), 6:30pm - 9:30pm

Thursdays - figure drawing lab, 1pm - 4pm

Saturdays - figure drawing lab, 1pm - 4pm

See our model lab calendar and membership info at  
<http://artleaguehouston.org> -> art classes -> members only