

# Art League Houston Winter 2008

january-march ➤ schedule of classes

**Register before December 15th and save \$25 on each class!**

Unless noted otherwise, all classes have a suggested supply list provided after registration.

## painting classes ▼

### Landscape Into Art

Parker, Steve (P-10)

Thursdays, 6:30 pm -9:30 pm

Jan. 10 - March 13 (10) weeks

\$310 members/ \$345 non-members

Learn to make fresh, finished paintings using your sketches, outdoor photographs, and memory. You will learn the essentials of utilizing memory and experience in your work to express something interesting and compelling about your subject. Using this method will help achieve a unique sense of abstraction, and help you see your subject with fresh eyes. In this class we will work through inevitable technical problems together. Instructor will give informal lectures and occasionally read from texts regarding the technique and inspiration of relative artists. Given class consensus and pleasant weather, students may paint outdoors. For information or to register call (713) 523-9530. Limit 12.



painting by Steve Parker



painting by Polly Liu



painting by Yachiu

Learn to make fresh, finished paintings using your sketches, outdoor photographs, and memory. You will learn the essentials of utilizing memory and experience in your work to express something interesting and compelling about your subject. Using this method will help achieve a

unique sense of abstraction, and help you see your subject with fresh eyes. In this class we will work through inevitable technical problems together. Instructor will give informal lectures and occasionally read from texts regarding the technique and inspiration of relative artists. Given class consensus and pleasant weather, students may paint outdoors. For information or to register call (713) 523-9530. Limit 12.

### Beginning Abstracts (Oils) -All Levels

Chilakamarri, Vachu (P-4)

Tuesdays, 9:30 am-12:30 pm

Jan. 8 - March 11 (10) weeks

\$310 members/ \$345 non-members

Paint in a manner that matches your mood. Learn to intuitively consider formal design, color, composition and mark making while learning about pivotal artists in abstract art history. This class will teach you to think **boldly** as well as instinctively! Classes will include regular critiques and instructor demonstrations. For information or to register call (713) 523-9530. Limit 9.

### Classical Methods & Materials through Still Life in Oil

Liu, Polly (P-13)

Thursdays, 6:30 pm-9:30 pm

Jan. 10- March 13 (10) weeks

\$310 members/ \$345 non-members

Seemingly complicated techniques will be de-mystified as you are guided through the steps of making traditional, archival paintings. Learn how to approach and prepare an oil painting using traditional 18<sup>th</sup> and 19<sup>th</sup> century methods and materials. We will focus on material set-up & safety, surface preparation, traditional drawing in charcoal, drawing transfer methods, and painting techniques. Students will complete two still-life paintings over the course of 10 weeks and will be given a reading list the first day of class. Recommended for students with intermediate to advanced drawing skills. For information or to register call (713) 523.9530. Limit 10.

## UPCOMING...

### November 2

Eric Michael Jones: *The Buffalo Hunters* opens @ 6 pm featuring music by DJ DELSUR. On view thru December 21

### November 17

*Grande Art Masque Ball + Silent Art Auction* - tickets on sale now!

### December 7

Fall Semester Ends

### December 8-13

Fall Make-Up Week

### December 15

Book Signing & Open House from 11 am-1 pm featuring the launch of a new book "Starving Artist & the Art of Nursing" by Penny Cerling. Book signing & art exhibition, coffee & pastries!

### December 15-16

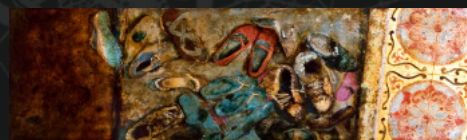
Fall Workshop Starts

### January 7

Winter Semester Starts

### January 12

PhiPhi Oanh: *Black Box* opens beginning with artist talk @ 6 pm. On view thru Feb. 22.



lacquer painting by PhiPhi Oanh

### January 29

Artist PhiPhi Oanh guest lecture and slide show, Tuesday, 6:45 pm in studio 2 at 1953 Montrose Blvd. Call (713) 523-9530 to reserve a seat. Free to the public.

### March 15

Winter Semester Ends

### March 17-22

Winter Make-Up Week

### March 31

Spring Semester Starts

### June 4-5 by 5 pm

Delivery deadline for the Juried Student Exhibition

### June 13

Juried Student Exhibition + Sale opening; Juror Kerry Inman of Inman Gallery

## jewelry classes ▼

### PMC Survey – All Levels

(Precious Metal Clay)

Lucas, Cheryl (J-1)

Monday, 10:30 am-1:30 pm

Jan. 7 - Feb. 11 (6) weeks

\$240 members/ \$275 non-members

\* includes \$10 of supplies

PMC bead by Cheryl Lucas



This class serves as a thorough introduction to Precious Metal Clay for the beginner and an opportunity for creative refinement of existing skills for the more advanced student. Students will be guided through the basics and secrets of working with PMC and designing jewelry pieces with PMC's unique characteristics in mind. Class will cover: creative textures, stone setting, ring making, PMC and glass combinations, refining, torch and kiln firing, patinas, finishing and much more. Students will leave this fun class with several

completely unique pieces of finished jewelry. Supplies may be purchased in advance or from instructor. For information or to register call (713) 523-9530. Limit 12.

### Jewelry- All Levels

Kennedy, Kathy (J-2)

Mondays, 2 pm-5 pm

Jan. 7 – March 10 (10) weeks

\$310 members/ \$345 non-members

\* \$35 supply fee payable to instructor first class

brooch by Kathy Kennedy



Basic construction techniques covered in this class include: piercing, drilling, bezel settings, soldering, roller texturing and hydraulic forming, as well as design, forging, stretching, inlay, reticulation, and die forming. Advanced and intermediate students pursue projects of choice with instructor supervision. For information or to register call (713) 523-9530. Limit 12.

### Jewelry- All Levels

Rogers, Mary (J-3)

Mondays, 6:30 pm- 9:30 pm

Jan. 7 – March 10 (10) weeks

\$310 members/ \$345 non-members

\* \$35 supply fee payable to instructor first class

necklace by Mary Rogers



Jewelry construction techniques including: piercing, drilling, soldering, riveting, forging, reticulation and roller printing, as well as hydraulic forming.

Advanced topics may include granulation, jewelry rendering, and blanking. A strong emphasis on problem solving helps students develop a personal design vocabulary, while the multi-level class allows new students to see a variety of advanced techniques and applications. Individualized instruction allows students to progress at their own pace. For information or to register call (713) 523-9530. Limit 12.

## painting classes ▼

### Classical Portrait Painting in Oil

Liu, Polly (P-6)

Tuesdays, 12:30 pm-3:30 pm

Jan. 8 - March 11 (10) weeks

\$310 members/ \$345 non-members

\*(does not include model fee)

to eliminate the problems of color and value and to concentrate on accuracy of drawing and the effects of light on the figure. The second part of the class utilizes a limited palette, allowing students to explore and understand the harmony and unity of light. For intermediate to advanced students. For information or to register call (713) 523-9530. Limit 7.

\*Model fee due first day of class, fee varies by class size. Students begin painting in "Grisaille"— painting executed entirely in monochrome, usually in shades of grey or brown—



Painting by Polly Liu

### Advanced Studio & Encaustic

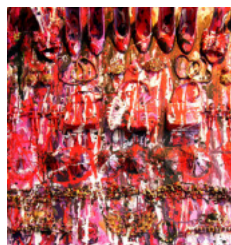
Babbitt, Salli (P-1)

Monday, 9:30 am-12:30 pm

Jan. 7 - March 10 (10) weeks

\$325 members/ \$360 non-members

art while focusing on a cohesive body of work for an upcoming exhibition. We experiment with layers while combining papers, vellums, inks, scratching,



detail of painting by Salli Babbitt

texturing, resin, and found objects. During this course, the instructor will give an encaustic demonstration in conjunction with weekly, private critiques. Students will also be given the opportunity to visit exhibitions and potentially exhibit their artwork. For information or to register call (713) 523-9530. Limit 12.

### Painting the Figure from Life- All Levels

Alison, Kelly (P-3)

Tuesday, 6:30 pm-9:30 pm

Jan. 8 - March 11 (10) weeks

\$330 members/ \$365 non-members

\*(does not include model fee)

as you discover the figure. Students will learn the basics of these mediums, as well as be encouraged to develop personal style and expression. Previous drawing or painting experience is not necessary. Featuring regular critiques and a guest lecture by exhibiting artist PhiPhi Oanh, Tuesday, 6:45 pm. For information or to register call (713) 523-9530. Limit 12.

\*Model Fee due first day of class, fee varies by size of class. Working from a live model, we will create a new painting each class. The instructor will demonstrate medium specific techniques in pastels, watercolor, acrylic and oils



mixed media by Kelly Alison

### Strictly Abstract

Babbitt, Salli (P-5)

Tuesdays, 6:30 pm– 9:30 pm

Jan.8-March 11 (10) weeks

\$325 members/ \$360 non-members

\*(includes partial material fee)

### Strictly Abstract-All Levels

Babbitt, Salli (P-11)

Thursdays, 9:30 am-12:30 pm

Jan.10- March13 (10) weeks

\$325 members/ \$360 non-members

\*(includes partial material fee)

opportunities to exhibit work, as well as visit art openings and exhibitions. For information or to register call (713) 523-9530. Limit 12.

Beginners to advanced, discover the essentials of abstract art. Learn many different techniques to maximize creative potential. Beginning with earth tones, grays, and a classical palette, we initially focus on texture and the harmony between backgrounds and foregrounds. Class will progress through texture building and effective use of mediums to integrating images. Gain understanding of composition, organizing structure, color, texture, and use of selective vision. Bi-monthly demonstrations are given, and interested students will be given

**Still Life in Oils -All Levels**

Alison, Kelly (P-2)  
Tuesdays, 1pm- 4 pm  
Jan. 8 - March 11 (10) weeks  
\$310 members/ \$345 non-members

This class is designed for those of you who have never painted before. Students will learn several different anyone-can-do oil techniques while exploring one of the most classical

themes in art. In each class, students will create a painting from a posed still life with the guidance of a teacher who believes anyone can learn to paint. There will be an emphasis on experimentation and developing individual style, as well as regular critiques to help you see your painting objectively. For information or to register call (713) 523-9530. Limit 12.



Painting by Kelly Alison

**Direct Painting Now!**

Parker, Steve (P-12)  
Fridays, 9:30 am-12:30 pm  
Jan. 11 - March 14 (10) weeks  
\$310 members/ \$345 non-members

\$10.00 supply fee due to instructor on first day of class. There are great challenges to painting an object directly from life. Although there is a sense of immediacy when rendering patterns of light and shadow, it is critical to determine the effects of light passing over an object and to develop the ability to see these patterns. This is essential to creating an interesting expression. Class will focus painting of lost and found edges, rendering techniques, treatment of backgrounds, and learning

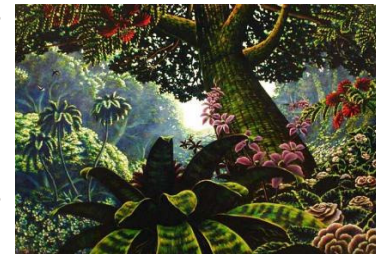
to see and paint tonal relationships with color. Instructor will give informal lectures and occasionally read from texts regarding the technique and inspiration of related artists. For information or to register call (713) 523-9530. Limit 12.



painting by Steve Parker

**Oil Painting: the Easy Method -All Levels**

Coy, Ruben (P-8) afternoon  
Wednesday, 1pm-4 pm  
Jan.9-March 12 (10) weeks  
\$310 members/ \$345 non-members



painting by Ruben Coy

**Oil Painting: the Easy Method -All Levels**

Coy, Ruben (P-9) evening  
Wednesday, 6:30 pm-9:30 pm  
Jan.9-March 12 (10) weeks  
\$310 members/ \$345 non-members

In this modern method we use oil over acrylic paint. The painting progresses in layers, first in layers of acrylic followed by layers in oil. The simplicity of this method makes this class ideal for the beginner and a boost for the advanced student. Using this technique creates finished paintings with a unique luminosity and a sense of depth. It is recommended that the extreme beginner use only acrylics to learn the layering method quickly. After understanding the basics of layering, they may progress to oils. For information or to register call (713) 523-9530. Limit 12.

**Creative Painting**

Cholla (P-7)  
Wednesday, 9:30 am-12:30 pm  
Jan.9-March 12 (10) weeks  
\$310 members/ \$345 non-members

Awaken your creativity! In this course we will learn to transpose and work from your photos and sketches. Instructor will cover the seven components of any successful painting including color, composition and texture. You may use oil, acrylic, watercolor, pastel, or mixed media. Individual instruction in each material will be given as students progress in their preferred style. For information or to register call (713) 523-9530. Limit 12.



Painting by Cholla

**Foundation Drawing - All Levels**

Chilakamarri, Vachu (D-4)  
Saturday, 9:30 am- 12:30 pm  
Jan. 12- March 1 (8) weeks  
\$260 members/ \$295 non-members

This fun, hands-on class will focus on the fundamentals of drawing, with tailored instruction to strengthen your individual skill set. We will focus on the fundamentals of "seeing": gauging accurate proportions, correct foreshortening, using negative space, seeing angles, etc. We will also focus on the basics "mark-making": line variation, lost and found edges, searching lines, tone variation, gradation, wrapping lines around form, etc. By the end of this class students will be able to draw what you see more accurately and more beautifully! For information or to register call (713) 523-9530. Limit 9.

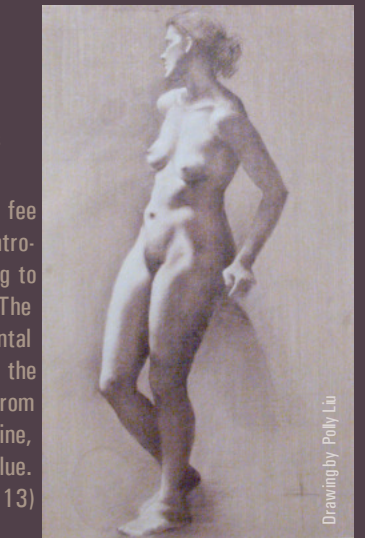
**Figure Drawing - All Levels**

Alison, Kelly (D-1)  
Mondays, 6:30 pm-9:30 pm  
Jan. 7 - March 10 (10) weeks  
\$310 members/ \$345 non-members  
\*(does not include model fee)

\* Model fee due first day of class, fee varies by class size. This class is specially designed for those students that have never drawn from a live model before. Lessons will include very simple, anyone can do, exercises in gesture, contour, mass and continuous drawing, observation techniques, work with cross angles, perspective, foreshortening, shading, form, layers and presentation. Students are encouraged to explore their own strengths and returning students are guided towards developing individual style and creating a body of portfolio work. For information or to register call (713) 523-9530. Limit 12.

**Classical Figure Drawing**

Liu, Polly (D-2)  
Tuesdays, 9 am-12 pm  
Jan. 8 - March 11 (10) weeks  
\$310 members/ \$345 non-members  
\*(does not include model fee)



Drawing by Polly Liu

\* Model fee due first day of class, fee varies by class size. Students are introduced to the French Atelier training to draw the human figure accurately. The method of "sight size", a fundamental scale system, is used to reproduce the figure accurately. Students work from a live model focusing on outline, proportion, shadow, shape and value. For information or to register call (713) 523-9530. Limit 7.

**Figure Drawing - All Levels**

Cholla (D-3)  
Thursdays, 9:30 am-12:30 pm  
Jan. 7 - March 10 (10) weeks  
\$310 members/ \$345 non-members  
\*(does not include model fee)

\* Model fee due first day of class, fee varies by class size. Come explore what has been one of the cornerstones of fine art throughout history. This class will put students at ease with figure studies and will teach how to "build" an accurate and beautiful drawing. We will learn how to use plumb lines as tools to gauge the initial accuracy of the drawing. This prevents an underlying distortion that so often yields unsatisfactory results. Students are encouraged to explore their own strengths and returning students are guided towards developing individual style and creating a cohesive body of portfolio work. Students will be encouraged to work in different media as appropriate. When you learn to draw the figure, you can draw anything! For information or to register call (713) 523-9530. Limit 12.

**mixed media classes ▼**

**Printmaking- All Levels**

Focus on Monotype & Etching  
Rodriguez, Armando (MM-4)  
Saturdays, 1 pm- 4 pm  
Jan.12 - March 15 (10) weeks  
\$310 members/ \$345 non-members

**Etching:** \$25 supply fee for etching students due on first day of class. Become acquainted with the art of copper etching, which inspired artists Rembrandt and Goya. We will be working exclusively with new and safe materials. Artists will be introduced to a variety of techniques for suitable for any skill level. For the final project, each student will create an edition, resulting in an exchange portfolio. **Monotype Printing:** Also known as the most painterly method among the printmaking techniques, monoprints and monotypes are essentially printed paintings. Although images can be similar, editioning is not possible- no two images can be exactly the same. The Monotype process creates a translucency and a quality of light very different from a painting on paper or a print. There is beauty in its spontaneity and combination of printmaking, painting and drawing. For information or to register call (713) 523-9530. Limit 12.

**Mixed Media- All Levels *New!***

Bause, Heather (MM-2)  
Thursday, 6:30 pm- 9:30 pm  
Jan.10 - Feb. 28 (8) weeks  
\$260 members/ \$295 non-members

Learn about the history of collage art- from its utilitarian use by the old masters to its pervasive use in celebrated contemporary art. We will cover the basics of mixed-media



Collage by Heather Bause

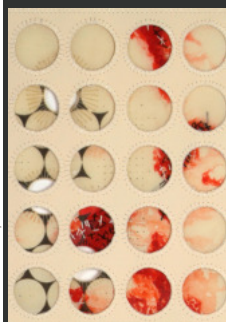
including: design, composition, drawing integration, various image-transfer methods, and technically and visually effective layering of image and paint. Students will complete several mixed-media pieces incorporating whatever images, textures, found objects, and drawings they find interesting! Class is open to all levels. For information or to register call (713) 523-9530. Limit 12.

**Silk Painting & Collage- All Levels**

Quayyum Agha, Anila (MM-1)  
Fridays, 1 pm-4 pm  
January 11- February 29 (8)weeks  
\$260 members/ \$295 non-members

Silk painting techniques have been practiced by many cultures across the world. This age old method produces vibrant colors and textures on silk and cotton fabrics. Techniques include: painting with fabric dyes, using Sabrasilk resist, stamping, drawing, silk-screening, sewing and adding surface embellishment. We

will initially focus on development of primary markings and images on the silk- using references relevant to student's unique visual concerns. As the work evolves, students begin to focus on embellishing the painted/stained silk and creating an interesting visual relationship between the embellishment & painted surface. Pieces will be finished and wall-ready at the end of this class. Open to all levels. For more information or to register call (713) 523-9530. Limit 12.



Mixed-Media by Anila

**Art Books- All Levels *New!***

Rodriguez, Armando (MM-3)  
Saturdays, 9:30 am-12:30 pm  
Jan.12 - March 15 (10) weeks  
\$310 members/ \$345 non-members  
\$35 supply fee due first class

Students are guided through the process of planning and finishing a one-of-a-kind art book using the *concertina method* (accordion fold), *saddle stitching* and basic *coptic* (external stitching) stitch. Students will have



Hand made book by Armando

access to a full size press for printing images as well as a smaller press with traditional lead type for printing text. For more information about this class, or to register call (713) 523-9530. For information or to register call (713) 523-9530. Limit 12.

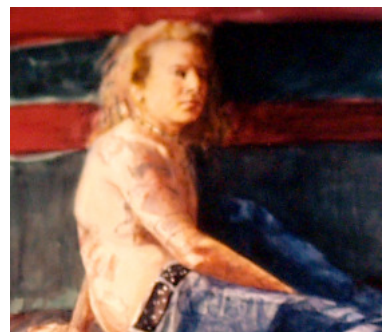
**watercolor classes ▼**

**Watercolor- All Levels**

Graham, Caroline (W-1)  
Monday, 1pm- 4 pm  
Jan. 7 - March 10 (10) weeks  
\$310 members/ \$345 non-members

**Watercolor- All Levels**

Graham, Caroline (W-2)  
Wednesday, 6:30 pm -9:30 pm  
Jan. 9 - March 12 (10) weeks  
\$310 members/ \$345 non-members



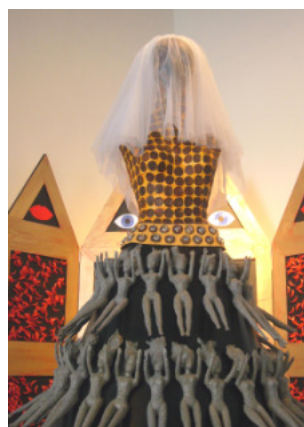
Watercolor by Caroline Graham

Explore the vibrancy and transparency of this medium. Instructor will emphasize color, design, and contrast. Students will learn to layer and control the pigment, rescue the white paper and still have a spontaneous, fresh-looking result. For more information or to register call (713) 523-9530.

**workshops ▼**

**Sculpture Workshop- All Levels**

Babbitt, Salli (WK-1) *New!*  
Sat & Sun , 10 am-3 pm  
Dec. 15 & 16 (2) sessions  
\$190 members/ \$225 non-members



Sculpture by Crystal Owens & Salli Babbitt

Come build something big! Students will use junk, found objects, wood, metal, wire, Styrofoam, mannequins, etc, to create a large-sized sculpture over two days. Instructor will help students navigate assembly techniques and problem solving to see each student's creative vision realized. Come with a plan, some glue, and whatever tools and junk you have collected. Class is open to all levels (including high-school students). Students need to contact instructor prior to first session to discuss material needs. For information or to register call (713) 523-9530. Limit 10.

**Pysanky: The Ancient Art of Ukrainian egg decorating- All levels**

Topchy, Nestor (MM-5) *New!*  
Thursdays, 1 pm -4 pm  
January 10- February 14 (6) weeks  
\$210 members/ \$245 non-members

An exploration of the traditional method of creating the Pysanka- including the historical, symbolic, sacred and contemporary meanings of this miniature masterpiece of folk art. The resultant work of Art is the product of a shared community event observed since Neolithic times in a relaxing, meditative and edifying environment; challenging, profound and simultaneously fun. This class is open and appropriate for ages over 10 and all skill levels. For more information or to register call (713) 523-9530. Limit 12.



Example of a traditional style of Pysanky decoration

**Anila Quayyum Agha** was born in Pakistan and studied in England, France, and Denton, Texas where she graduated with her MFA. Her work has been exhibited internationally as well as throughout the United States, primarily in Texas. Hand sewing and embroidery have become her main drawing tools, which she then incorporates into geometric compositions of cutout designs on paper. She says about her recent work, "I am intrigued by the frail and ephemeral reminders of things, of the recent or distant past, or of the impressions left behind by different traditions, cultures and mores." In addition to classes at Art League Houston, Agha also teaches at the University of Houston.



**Kelly Alison** studied painting at West Texas State University in Canyon, Texas, under David Rindlisbacher, and philosophy at Baylor University in Waco, Texas. Moving to The University of Houston her junior year, she was one of the students involved with the original Lawndale Art Annex, where she studied under Richard Stout, Gael Stack, John Alexander, and James Surls. Kelly Alison's figurative work has been exhibited in National and International museums, as well as published in books, catalogs and magazines such as *Art in America*, *Texas Monthly* and *Town and Country*. Alison's work is on permanent exhibition in downtown Houston as part of the Wayfinder project and her work can be seen in many public collections.



**Salli Babbitt** graduated with a BFA from the University of St. Thomas, and has studied at the University of Texas San Antonio and Sam Houston State. Her award-winning work has been acquired by corporations and collectors from around the world. Her most recent solo exhibition at Deborah Colton Gallery showcased a multi-media exhibition investigating the role and expression of the feminine in contemporary culture. She has been teaching classes at Art League Houston over 10 years.



**Heather Bause** graduated with a BFA from the University of Houston, where she studied painting under Al Souza, Gael Stack, Rachel Hecker, Derek Boshier and Aaron Parazette. Her mixed media work has been exhibited in multiple galleries as well as published in online journals, catalogs and design magazines such as *Art for the Wall*, *The Insider* and the *Houston Press*. "Using collage, Bause is able to capitalize on the organic nature of assembling such disparate images in a seemingly accidental way." Bause's solo exhibition, *Antecedents*, is currently on display at DesignWorks Gallery in downtown Galveston.



**Vachu Chilakamarr**i has been in numerous juried and solo exhibitions, at places such as Dayton Visual Art Center, Miamisburg Art Gallery, and Fairborn Art Association. Most recently, she had a solo exhibition at Intexure Gallery, Houston. She has won multiple awards including the Furtherance Fund Artist Grant in 2002. After receiving a BS in Biology, she studied the figure and anatomy at Columbus College of Art & Design and Central State University. In addition to classes at ALH she teaches part-time at Kingwood College.



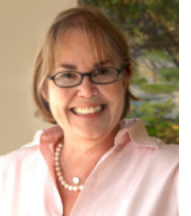
**Cholla** is a celebrated area portrait artist who worked as a court room sketch artist for NBC News for several years before pursuing art as a full time career. She studied at the Art Student's League in New York where she was greatly influenced by Rafael Soyer's naturalist style. Her work is collected and exhibited worldwide. She lives and works full-time as a studio artist in Houston, and has been teaching classes for Art League Houston for 40 years!



**Ruben Coy** studied at the University of Houston and The Houston Museum of Fine Arts School. An instructor for 24 years, his works are found in numerous exhibitions, museums, galleries and collections. His popular rainforest paintings reference the mind's eye—with the theme of *earth as a sacred place*, they evoke both religious and sensuous feelings. Ruben has been teaching at Art League Houston for over 15 years. He specializes in glazing techniques with oils.



**Caroline Graham**, a signature member of the Watercolor Artists Society, began studying art at the Witte Museum and McNay Art Institute in San Antonio. Continuing in the arts, she received her MA from the University of Texas at Austin. Her love of figures and portraits eventually led to study in the Anatomy Lab at the Baylor College of Medicine. An award winning watercolorist and studio artist, her work is included in numerous exhibitions and collections. Her commissions are seen all over Houston, and collected throughout the country. She has been teaching at Art League Houston for over 12 years.

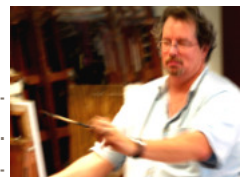


**Kathy Kennedy** graduated from the University of Houston with a MFA in Jewelry and Metalsmithing. She has over 20 years of experience as a professional bench jeweler and jewelry designer. Her work covers a wide range, from whimsical sculptures to traditional designs. When designing for pleasure, color and humor are a top priority. Vast experience gives Kathy a broad range of knowledge and skills which she extends to her classes.

**Polly Liu** received a BA and BFA from the Dominican College, Houston, an MFA from the Dominican Fine Art Institute in Florence, Italy, and also completed graduate studies at UH, University of St. Thomas, and in Florence, Italy. She has received numerous exhibitions honors, and her work is in private collections in Europe and Canada. Ms. Liu is an accomplished teacher whose range encompasses Classical Methods, Watercolor, Chinese Painting techniques, and calligraphy. She works extensively in portraiture, figurative and landscape painting.



**Steve Parker** is a graduate of the Texas Academy of Art and has taught for over 20 years. He is a full time studio artist, and his work can be seen in many exhibitions, as well as private and public collections. "Part memory, part observation, part intuitive response to deeply felt experiences, Steve Parker's landscapes evoke in the viewer the feeling of having remembered something long forgotten, a place once visited. There is a feeling of recognition, of the familiar and yet the elusive." - *Michael Chmiel, Owner, Jack Meier Gallery*



# ART CLASS & WORKSHOP POLICIES

Phone: 713.523.9530 Fax: 713.523.4053  
1953 Montrose Blvd. Houston, TX 77006

ah@artleaguehouston.org  
www.artleaguehouston.org

ALH office hours:  
M-F: 9-5 pm & Sat: 11-5pm

- Art League Houston reserves the right to combine or reschedule classes, or adjust tuition and fees as needed.
- Art League Houston reserves the right to change class instructors when necessary.
- Art League Houston reserves the right to refuse enrollment to participants with a history of unacceptable behavior.
- If it is necessary for Art League Houston to cancel a class for any reason; all registered participants will be informed as soon as possible and Art League Houston will extend the opportunity to transfer to another class, or receive a credit.
- Credit must be used one year from date issued.
- Tuition for classes will not be pro-rated.

## PAYMENT

- Enrollments are not accepted without payment in full. Checks, cash, credit cards (American Express, Discover, Master Card, and Visa) and gift certificates are accepted.

## DISCOUNTS

- Members of Art League Houston receive a tuition discount on classes and workshops for one year from the date their membership is purchased.

## ADDITIONAL FEES

- Some courses may require additional fees paid to Art League Houston or collected the first day of class by instructor. These fees are stated in the class schedule, and may include, but are not limited to, supplies, model fees, and equipment maintenance.
- Students registering after the expressed registration deadline will be charged a non-refundable, minimum late registration fee of \$15.00.

## WITHDRAWAL & REFUNDS

- **\*THE \$60 REGISTRATION FEE IS NON-REFUNDABLE, UNLESS CLASSES ARE CANCELED BY ART LEAGUE HOUSTON.**
- **\* Membership fees are non-refundable.**
- Refunds will be issued\* for students that officially withdraw before the first scheduled class meeting.
- **Notice of withdrawal must be completed on the Art League Houston drop form which can be emailed or picked up at our offices. Call (713) 523-9530 x103 to obtain a drop form.**
- **Failure to attend sessions or verbal notification will not be regarded as an official notice of withdrawal. Our drop form must be completed in full and returned to the office before the first scheduled day of class.**
- Refunds will be processed after the second week of classes has been completed. A refund check will be mailed to you no later than two weeks from this time.
- **NO REFUNDS WILL BE GIVEN AFTER THE FIRST CLASS MEETS.**

Art League Houston is a 501(c)(3) non-profit charitable organization.

RETURN FORM BY: Mail/ Drop Off: 1953 Montrose Blvd. Houston, TX 77006 Fax: (713) 523-4053 Phone: (713) 523-9530

↑ CUT HERE

## ART LEAGUE HOUSTON WINTER 2008 REGISTRATION & MEMBERSHIP FORM

How did you hear about us? \_\_\_\_\_

First Time Enrolling

NAME \_\_\_\_\_

EMAIL \_\_\_\_\_

ADDRESS \_\_\_\_\_

PHONE \_\_\_\_\_

CITY \_\_\_\_\_ STATE \_\_\_\_\_ ZIP CODE \_\_\_\_\_

CELL PHONE \_\_\_\_\_

**REGISTER BEFORE DECEMBER 15TH AND RECEIVE \$25 OFF EACH CLASS!**

*\*(excludes workshops)*

COURSE TITLE	COURSE CODE	DAY / TIME	TUITION	LAB FEES
	( - )		\$	+ \$
	( - )		\$	+ \$

Payment Method: <input type="checkbox"/> Check # _____ <input type="checkbox"/> Cash Payment	<b>Policies Read:</b> (initial) _____	SUBTOTAL	\$
<input type="checkbox"/> MasterCard <input type="checkbox"/> Visa <input type="checkbox"/> American Express <input type="checkbox"/> Discover	*Security code _____	DISCOUNT	-\$
Card # _____	Exp. Date ____/____/____	DONATION	\$
Cardholder _____	Billing Zip _____	MEMBERSHIP	\$
		LATE FEE	\$
		<b>TOTAL</b>	<b>\$</b>

All registrants must sign below.

**\*I have read and understand the policies above. SIGN HERE** \_\_\_\_\_

Office Use Only: Date Paid \_\_\_\_\_ Total Paid \$ \_\_\_\_\_ Received By (initial) \_\_\_\_\_ Memb. expires on: \_\_\_\_/\_\_\_\_/\_\_\_\_

# JOIN TODAY!

**Our Vision:** Art League Houston provides an opportunity for all members of the community to experience the contemporary visual arts.

**Our Mission:** Art League Houston cultivates awareness, appreciation and accessibility of contemporary visual art within the community for its cultural enrichment.

Art League Houston is one of the longest operating non-profit visual arts organizations and was the first alternative art space in Texas. Founded in 1948 and incorporated as a non-profit organization in 1953. Art League Houston was created to promote the public appreciation of and interest in the visual arts. While continuing our commitment to those who believe that visual arts institutions benefit the entire community, you are invited to become a member of Art League Houston and help support one of Houston's most valuable cultural assets. Your membership helps support and sustain the operations of Art League Houston.



Surviving Katrina & Rita in Houston

## OUTREACH CLASSES

Art League Houston has offered Outreach Programs since 1991. Art League Houston Outreach classes are presented free of charge and provide access to the creative process for individuals in the greater Houston area who often have little or no opportunity for creative outlet or artistic expression. All the Art League Houston Outreach Classes are offered at the Art League Houston School located at 1953 Montrose Blvd. For more information on how to sign up for the Outreach program please contact the Art League Houston office at (713) 523-9530.



Students in the Healing Arts class

- **HIV + Healing Art Group & Cancer Related Illnesses**  
-Fridays, 9:00am- 3:00pm
- **Physically Challenged Healing Art Group**  
-Wednesdays, 1:00pm- 3:30pm
- **Multiple-Sclerosis Healing Art Group**  
-Wednesdays, 10:00am- 12:30pm

## VOLUNTEER



Aaron-volunteer, Salli-instructor, & Crystal-volunteer

A big thanks to all of our wonderful volunteers helping throughout the year with the Outreach classes, Bayou City Art Festivals, our annual Gala, and so much more! We really appreciate all your help! If you would like more information about upcoming volunteer opportunities please contact the office at (713) 523-9530.

## MEMBERSHIP LEVELS

- ⇒ **\$35 individual**
- ⇒ **\$60 household**
- ⇒ **\$100- \$499 Sponsor**
- ⇒ **\$500- \$999 Benefactor**
- ⇒ **\$1000 & up Patron**
- ⇒ **\$25 Student & Senior (with ID)**



Surviving Katrina & Rita in Houston

Art League Houston is a 501(c)(3) non-profit charitable organization.

## MEMBERSHIP BENEFITS

### All members receive:

- a \$25.00 discount on each art class taken for an entire year!
- invitations to exhibitions and special events!
- free workshops each year!
- benefit of attending Members Only Groups listed below

### PleinAir Painting Group:

A free & informal outdoor painting group of Art League Houston members meets the third Saturday each month in various locations around Texas. For more info, contact Coordinator:

Lawrence Goree  
Studio : 713-738-7347  
Mobile: 713-416-6224  
LEGoree@prodigy.net

- October 20, 2007/ Lake Houston State Park in New Caney, Texas 77357
- November 17, 2007/ Russ Pittman Park 7112 Newcastle Bellaire, Texas 77401
- December 15, 2007/ Brazos Bend State Park in Needville, Texas \$4.00 entry fee

### Members Only Model Lab:

Bring \$6.00 cash for the model each 3 hour session. This non-instructive figure drawing lab is only open to Art League Houston Members. For information call Sarah @ 713.523.9530. Days of the week may vary, check online calendar for schedule.

- Thursdays: 1-4 pm
- Saturdays: 1-4 pm
- Fridays: 6:30-9:30 pm (days change)

To view the schedule of models visit :  
> [www.artleaguehouston.org](http://www.artleaguehouston.org)  
> Art classes  
> Members Only

**Juried Student Exhibition:** Art League Houston Students registered for classes from the Fall 2007, Winter & Spring 2008 semesters are eligible to submit work to the annual Art League Houston Juried Student Sale & Benefit in June 2008; juror Kerry Inman of Inman Gallery. A portion of all sales will benefit the Healing Art Programs.



At the 2007 Summer Art Sale, Benefiting the students of the Healing Art Programs. From right: Healing Art Students pictured: Heather, Julie, Spencer, Crystal-volunteer.

# art league houston

ALH office hours: M-F: 9-5 & Sat: 11-5  
 1953 Montrose Blvd. Houston, TX 77006  
 Phone: 713-523-9530 Fax: 713-523-4053  
 www.artleaguehouston.org



**Art League Houston students  
 get 15% off regular prices at  
 Art Supply on Main!**

**Juried Student Exhibition:** Art League Houston Students registered for classes from the Fall 2007, Winter & Spring 2008 semesters are eligible to submit work to the annual Art League Houston Juried Student Sale & Benefit in June 2008; juror Kerry Inman of Inman Gallery. A portion of all sales will benefit the Healing Art Programs. For information call Sarah at (713) 523-9530.

## meet the instructors ▼ ... continued



**Armando Rodriguez** was born in Mexico and moved to the U.S. as a child. He received a BFA in Printmaking from the University of Houston in 1982. He works in many media including photography, printmaking (etching, lithography, and monotype), graphic design and bookmaking. In addition to teaching at Art League Houston, he also works for the Houston Chronicle and in the education department of the Museum of Fine Arts Houston.

**Mary Rogers** received her MS from the University of Houston, Clear Lake, and her BS in Art Education from the University of Northern Illinois. She is an instructor at Bellaire High School and an award-winning, nationally recognized jeweler and metal-smith. In 2006 the Texas Commission on the Arts honored Mary as a "Texas Original" for her outstanding craftsmanship and high artistic standards.



**Cheryl Lucas**, a lifetime potter, discovered PMC in 2001. She currently teaches PMC nationally and internationally. Her work is in many private collections throughout the US and Mexico. She is a certified Level 2 Instructor with the PMC Connection and additionally through the PMC Guild and Art Clay World.

NONPROFIT ORG.  
 US POSTAGE PAID  
 HOUSTON, TX  
 PERMIT NO. 8909

## HOW TO REGISTER :

- Over the phone ▶ 713-523-9530 ph.
- Fax registration form ▶ 713-523-4053 fax
- Register online ▶ www.artleaguehouston.org
- Hand deliver or mail to ▶ 1953 Montrose Blvd.  
Houston, TX 77006

## REGISTRATION DATES: register early save \$25

\* Pre- Registration ▶ Nov 26 - Dec 1

\*for currently enrolled students

**Early Registration** ▶ Dec 3 - Dec 15 *save 25\$*

General Registration ▶ Dec 17 - Dec 29

**Late Registration** ▶ After Dec 29 \$15 late fine

Call (713) 523-9530 before November 15th to purchase your **\$25** chance to win an *all-inclusive* vacation to **Venice, Amsterdam, San Miguel, Philadelphia, Washington D.C., Santa Fe, or New Orleans!** One winner per destination will be drawn from a total of *only 3,000* tickets!